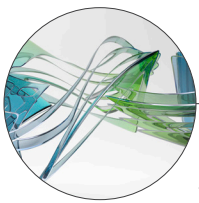
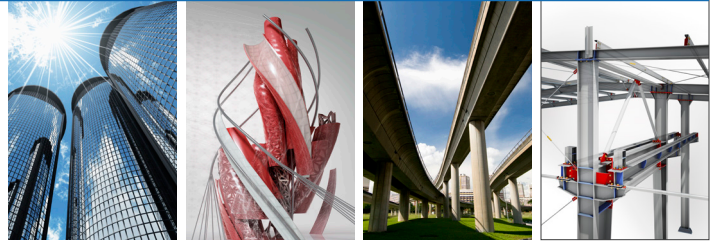


PRODUCTS AND SERVICES

U.S. CAD is a full-service technology consultant for the architecture, engineering, construction, and infrastructure industries, connecting companies with the software, hardware, training, production, and consulting they need to achieve their unique business goals. With our team's deep industry knowledge, comprehensive mix of services, and product expertise, U.S. CAD is sought after by an impressive array of companies to assist in recommending and implementing advanced technologies within an organization. U.S. CAD is an Autodesk Platinum Partner, and also a member of the Leica Geosystems, 3D Robotics, Panzura, CADLearning, and KobiLabs partner networks.

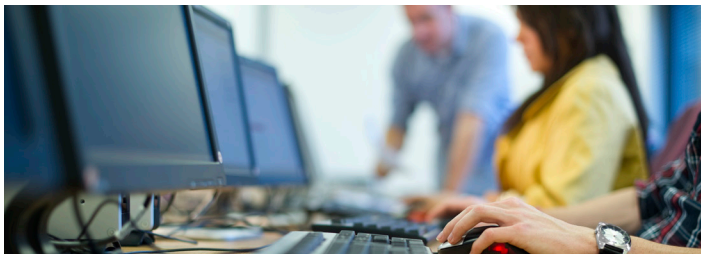


PRODUCTS

U.S. CAD offers the full range of Autodesk products, as well as other complementary technologies, such as:

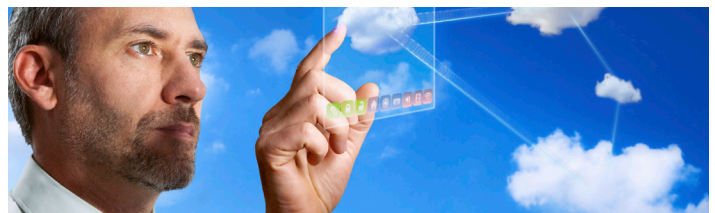
- AutoCAD
- BIM 360
- Civil 3D
- InfraWorks
- Navisworks
- ReCap
- Revit
- Autodesk AEC Collection
- Panzura
- iConstruct
- CADLearning
- Site Scan
- Leica Geosystems
- HoloLive
- Office365

The full list of Autodesk products can be found on the U.S. CAD website. We can also help you with renewals, Subscriptions, and identifying which Industry Collection best fit your needs.



PRODUCT TRAINING AND CERTIFICATION

Product Training is one of the many services we provide, and can be customized to fit your organization's needs. Our certified Instructors can provide training onsite at your office or at one of our Autodesk Authorized Training Centers. Your team can also become Autodesk Certified through one of our Authorized Certification Centers.



SERVICES

Our team can help you identify what services your organization needs to help you achieve your BIM goals.

BIM Consulting – Delivery of completion solutions and technical personnel, encompassing three business areas: project workflow consulting, product workflow consulting, and collaboration workflow consulting.

BIM Production – Delivery of project-specific BIM requirements to help you meet the most demanding project standards and timelines.

BIM Implementation – Execution of Autodesk-based BIM technologies for architects, engineers, general and sub-contractors, and owner/operators.

Facilities Management – Integrated solution for creating, managing, and maintaining valuable Building Information Models as workplaces are designed, built, and used.

Virtual Design & Construction Services – Coordination and implementation services to find and resolve building project challenges and issues before construction to reduce project waste and errors.

3D Laser Scanning – Comprehensive services include scanning equipment (rental or sale), training, and processing and modeling.

Here are additional details about the many products and services from U.S. CAD. If you have any questions or would like assistance in identifying the right solution for you, please contact your Account Manager or call (877) 648-7223.

U.S. CAD ANNUAL MEMBERSHIPS

Are you looking to maximize your investment in Autodesk technology? Do you think BIM standards, content, workflows, best practices, mentoring, and regular assessment and education are critical to your corporate identity? Do you want to maintain or establish your position as a thought leader in your industry and in the markets you serve? Is it part of your mission to ensure your team is equipped to succeed, and therefore, your company is poised to win in this ever evolving and competitive marketplace?

If you answered "YES" to any of these questions, then please contact U.S. CAD today to learn how we can help you ACHIEVE MORE.

Contact your U.S. CAD Account Manager to learn more about the annual membership tiers and how we can personalize a plan to meet your business objectives.

SCAN TO BIM

U.S. CAD combines our experience as both a Leica Geosystems Distributor and Autodesk Platinum Partner to provide you with a comprehensive range of products and services as part of our full-circle approach to 3D point clouds and scanning, including:

- **Sales and Rentals:** We can help you determine the device that best fits your application. Our scanners are also available for daily, weekly, and monthly rental rates.
- **Training and Consulting:** Let U.S. CAD's experienced team help you determine the most effective processes and workflows for your needs.
- **Processing Services:** Our technical experts can help you save time by converting your scanned data into Revit or AutoCAD 3D models.

AUGMENTED REALITY

Whether your team is responsible for BIM coordination, QA/QC, field validation, clash detection, or all of the above, advances in the technical capabilities of augmented and mixed reality hardware are changing the way these tasks are performed.

HoloLive is an application for the Microsoft HoloLens developed by VisualLive3D that allows you to visualize and interact with your models from applications like Revit and Navisworks at scale before and during construction. With HoloLive, you can:

- Push your models to HoloLens with a few clicks
- Use site survey points or a scan marker to position model precisely
- Visualize your model in true 1:1 scale
- Sync your models with HoloLens for offline access in the field
- View your models with finished textures and materials



SITE SCAN: DRONES FOR AEC

Inspections, scans, and survey are performed every day in the construction, utility, and telecom industries. However, businesses often struggle to efficiently and safely capture and analyze the insights they need. Current methods are often costly and time-consuming, fragmented and incomplete, or dangerous to employees.

Designed from the ground up for field professionals, Site Scan™ from 3D Robotics is intuitive, powerful, and integrates with design solutions such as Autodesk ReCap, Autodesk Revit, Autodesk BIM 360, and Autodesk Civil 3D. Site Scan includes the Solo drone and controller, Sony UMC-R10C camera, and unlimited access to the 3D Robotics cloud.

WORKFLOW DISCOVERY

The workflow discovery process is comprised of three simple steps intended to help identify and resolve current pain points in your key workflows.

1. **Discover and Document:** Select, investigate, and diagram one or more of your typical workflows, especially those involving multiple tools and/or decision makers.
2. **Score and Summarize:** Evaluate the workflow(s) based on best-in-class industry standards and capabilities.
3. **Recommend and Review:** Review the scores and offer helpful recommendations to improve workflow efficiency and/or deliverables.



Learn how U.S. CAD can help you Win More, Produce More, and Achieve More!

(877) 648-7223 | info@uscad.com | www.uscad.com

