

AUGMENTED REALITY FOR LIVE VISUALIZATIONS

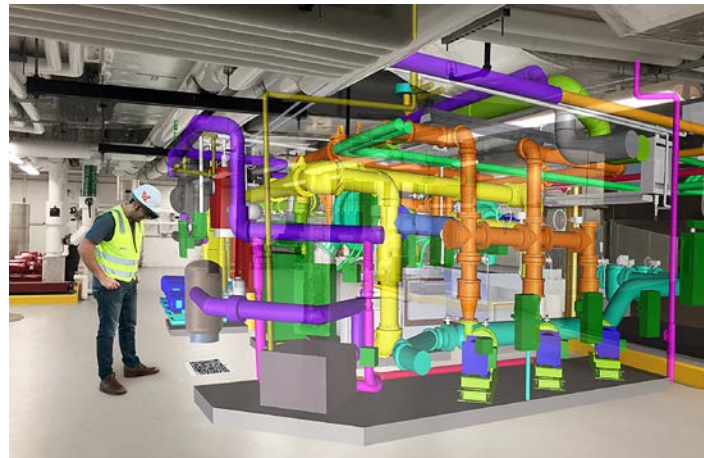
Whether your team is responsible for BIM coordination, QA/QC, field validation, clash detection, or all of the above, advances in the technical capabilities of augmented and mixed reality hardware are changing the way these tasks are performed. With augmented and mixed reality, you can visualize and interact with your designs live in 3D before and during the construction phase.



VIEW, DESIGN & INTERACT IN MIXED REALITY

Developed by VisualLive3D, HoloLive is an application for the Microsoft HoloLens, a self-contained, holographic computer that contains multiple sensors, advanced optics, and a custom holographic processing unit, enabling you to engage with your digital content and interact with holograms in the world around you. With HoloLive you can:

- Push your design models to HoloLens with a few simple clicks
- Position your design model in the right spot/coordinates in your site/space
- Use site survey points or a scan marker to position model precisely
- Visualize your model in true 1:1 scale
- Take advantage of VisualLive3D Toolkit features (measure, scale, and more)
- Sync your models with HoloLens for offline access in the field
- View your models with finished textures and materials



HOLO LIVE



PUSH 3D MODELS INTO REALITY

Throughout the duration of the design and construction phases of a project, designers, general contractors, subcontractors, and owners can use HoloLenses to view models in a brand new way. When using the HoloLive application to push designs to the HoloLens, you can:

- Review clashes, or congested areas of a project, in a 1:1 scale
- Review projects in the office by reducing the size of the project and placing the model on top of a conference table, for example, for review
- Verify the placement of installed components as compared to the model to confirm proper installation on-site
- Look at preliminary design options of an entire project, either in the office or at the project location

READY TO START VISUALIZING YOUR MODELS IN 3D?

U.S. CAD is the exclusive distributor of HoloLive and our team has expertise in implementing technology to improve design, construction, and building operations workflows.

Contact your U.S. CAD Account Manager or call (877) 648-7223 to schedule a live demonstration.

When you purchase a HoloLive package, you receive a license for the HoloLive3D HoloLens application and unlimited access to the Revit and Navisworks Manage plugins.